

# Invia<sup>®</sup> Silverlon<sup>®</sup> NPWT

Antimicrobial Wound Contact Dressing

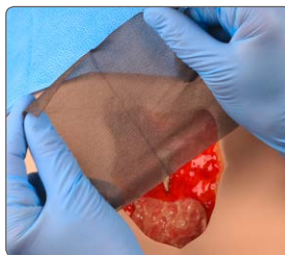
Application guide with the Invia<sup>®</sup> Foam Dressing Kit with FitPad



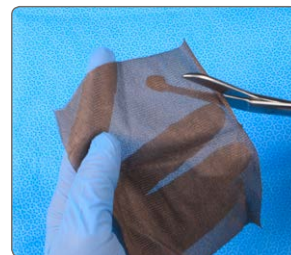
This Quick Card does not replace the instructions for use REF 201.0959 and 200.8923



**1. Cleanse wound** with normal saline, distilled water, or sterile water. Remove necrotic debris or eschar as needed.



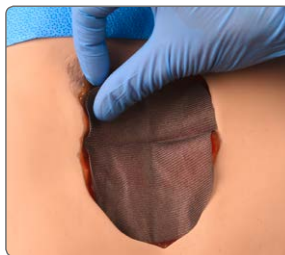
**2. Select the appropriate size** of Invia Silverlon dressing that will fully cover the wound. (10 x 12 cm or 12 x 20 cm)



**3. Trim the dressing** as needed to ensure the dressing is in full contact with the wound bed, edges, or undermining.



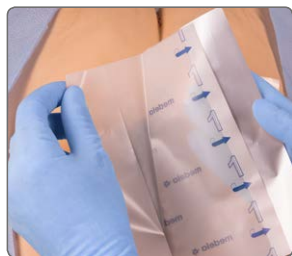
**4. Activate the dressing** by thoroughly moistening with normal saline, distilled water or sterile water.



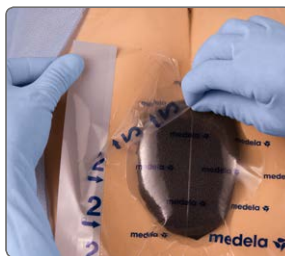
**5. Place the Invia Silverlon dressing** directly over the wound. Ensure dressing is in direct contact with the wound bed and edges. Either side can be used.



**6. Cut the foam** to the size and shape of the wound bed. **Place foam over contact dressing.** Do not pack tightly.



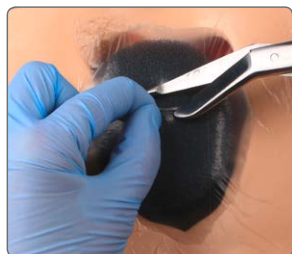
**7. Cover foam with transparent film.** Partially peel back one side of layer 1. Place the adhesive side down over the wound and remove the other part of layer 1.



**8. Now remove the transparent backing film** labeled 2.



**9. Remove the perforated silver colored tab** on the side. The film should extend 3–5 cm beyond the wound margin to facilitate adequate seal.



**10. Select appropriate location** for the external suction pad (FitPad) to be applied. Pinch the film and cut a **small hole** (approx. 1 cm).



**11. Peel off the backing** of the FitPad to expose the adhesive and **place over the previously cut hole** in the dressing. Press firmly for adherence.



**12. Attach the dressing tubing** to the pump tubing by pushing the **Quick-connector** together until you hear a click.

**Invia Silverlon NPWT dressings are indicated for a total duration of contact (i.e. where treatment involves consecutive application of individual dressings) of up to 30 days.**

**Replace Invia Silverlon dressing when the NPWT dressing is changed.**


**Do not use Invia Silverlon on patients with sensitivity to silver or nylon.**

**Do not use on 3<sup>rd</sup> degree burns.**

**Do not use petroleum based ointments or creams under Invia Silverlon Dressings.**

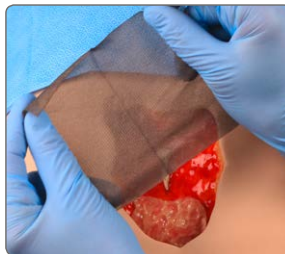
**Do not moisten Invia Silverlon Dressings with hydrogen peroxide or povidone iodine.**

Invia® Silverlon® NPWT Antimicrobial Wound Contact Dressing  
Application guide with the Invia® Gauze Dressing Kit with FitPad

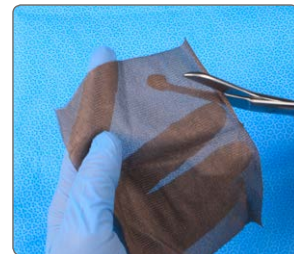
 This Quick Card does not replace the instructions for use REF 201.0959 and 200.9065



**1. Cleanse wound** with normal saline, distilled water, or sterile water. Remove necrotic debris or eschar as needed.



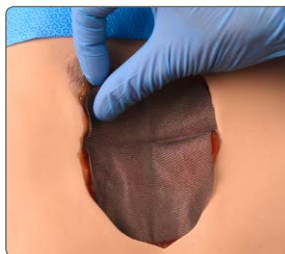
**2. Select the appropriate size** of Invia Silverlon dressing that will fully cover the wound. (10 x 12 cm or 12 x 20 cm)



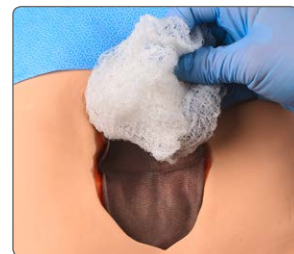
**3. Trim the dressing** as needed to ensure the dressing is in full contact with the wound bed, edges, or undermining.



**4. Activate the dressing** by thoroughly moistening with normal saline, distilled water or sterile water.



**5. Place the Invia Silverlon dressing** directly over the wound. Ensure dressing is in direct contact with the wound bed and edges. Either side can be used.



**6. Saturate gauze** with saline. **Place over the contact dressing.** The gauze should fill the wound cavity. Do not pack tightly.



**7. Cover gauze with film.** Partially peel back one side of layer 1. Place the adhesive side down over the wound and remove the other part of layer 1.



**8. Now remove the transparent backing film** labeled 2



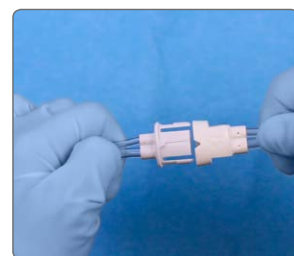
**9. Remove the perforated silver colored tab** on the side(s).



**10. Select appropriate location** for the external suction interface FitPad. **Cut a small hole** in the transparent film, no more than 1 cm in diameter.



**11. Peel off the backing of the FitPad** to expose the adhesive and **place over the previously cut hole** in the dressing. Press firmly for adherence.



**12. Attach the dressing tubing** to the pump tubing by pushing the **Quick-connector** together until you hear a click.

**Invia Silverlon NPWT dressings are indicated for a total duration of contact (i.e. where treatment involves consecutive application of individual dressings) of up to 30 days**

**Replace Invia Silverlon dressing when the NPWT dressing is changed.**

**Do not use Invia Silverlon on patients with sensitivity to silver or nylon.**

**Do not use on 3<sup>rd</sup> degree burns.**

**Do not use petroleum based ointments or creams under Invia Silverlon Dressings.**

**Do not moisten Invia Silverlon Dressings with hydrogen peroxide or povidone iodine.**

Please contact us or your local Medela representative for details.

**EC REP** Emergo Europe  
Molenstraat 15  
2513 BH The Hague  
The Netherlands  
Tel. +31 70 345 8570

**United Kingdom**  
Medela UK Ltd.  
Huntsman Drive  
Northbank Industrial Park  
Irlam, Manchester M44 5EG  
United Kingdom  
Phone +44 161 776 0400  
Fax +44 161 776 0444  
info@medela.co.uk  
www.medela.co.uk

**International Sales**  
Medela AG  
Lättichstrasse 4b  
6341 Baar  
Switzerland  
Phone +41 41 562 51 51  
Fax +41 41 562 51 00  
ism@medela.ch  
www.medela.com

 Argentum Medical LLC  
2571 Kaneville Court, Geneva,  
Illinois 60134, USA  
Phone +1 630 232 2507  
Fax +1 630 232 8005